



GMT MONTHLY MEMBERSHIP PROGRESS REPORT

Results as of: 1/31/2020

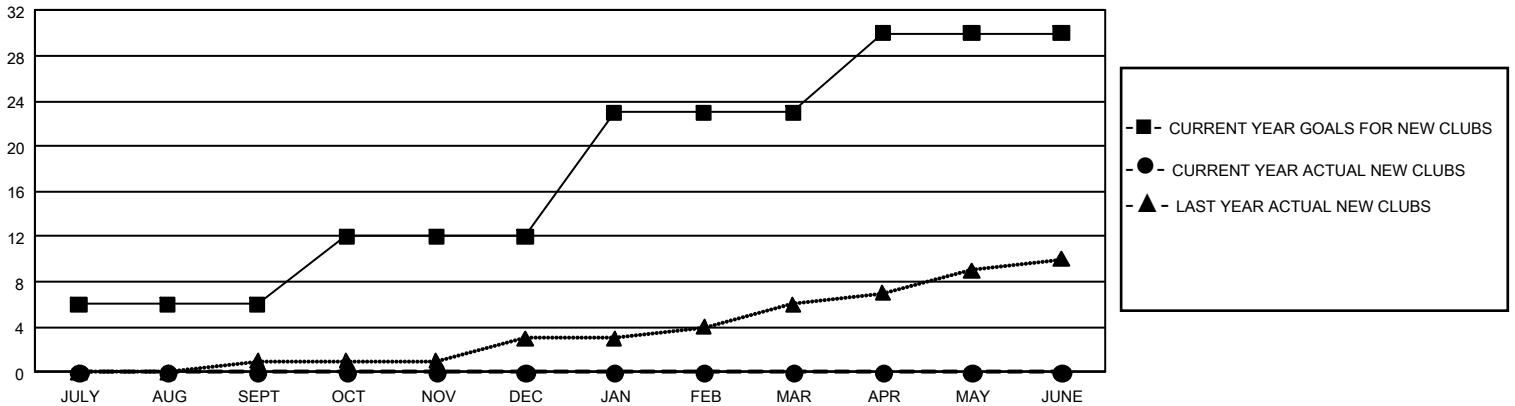
GMT Constitutional Area 1, Group M

GMT: OPEN

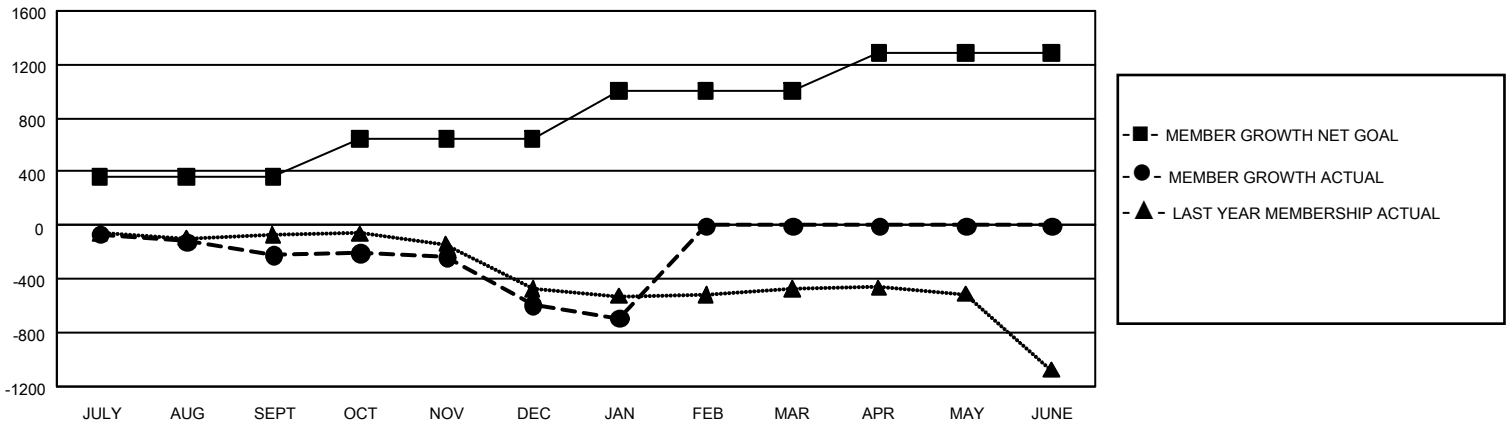
REPORT DOES NOT INCLUDE CLUBS IN UNDISTRICTED AREAS.

Clubs				Members			
RESULTS FOR 2019-2020				RESULTS FOR 2019-2020			
QUARTER	NEW CLUB GOAL	NEW CLUBS	DROPPED CLUBS	QUARTER	MEMBER GROWTH NET GOAL	MEMBER GROWTH ACTUAL	DROPPED MEMBERS ACTUAL (including transfers)
JULY/AUG/SEPT	18	0	6	JULY/AUG/SEPT	1,080	536	623
OCT/NOV/DEC	18	0	8	OCT/NOV/DEC	855	477	767
JAN/FEB/MAR	33	0	4	JAN/FEB/MAR	1,080	219	285
APR/MAY/JUNE	21	0	0	APR/MAY/JUNE	849	0	0

GOALS AND ACTUAL NEW CLUBS CUMULATIVE



GOALS AND ACTUAL MEMBERS CUMULATIVE



DROPPED CLUBS: 18	359 CLUBS OF 845 ADDED 1 OR MORE NEW MEMBERS	<u>GENDER DISTRIBUTION</u> MALE 11,823 (64.19%) FEMALE 6,597 (35.81%)
<u>DROPPED MEMBERS</u> DECEASED 189 CLUB CANCELLED 165 OTHER 1,320 <hr/> TOTAL 1,674	CLICK HERE FOR CUMULATIVE MEMBERSHIP DATA	TOTAL FAMILY UNIT MEMBERS 3,944 FAMILY MEMBERS PAYING HALF DUES 2,021